

PixLite E4-S Mk3 Quick Start Guide

1 - Physical Connections

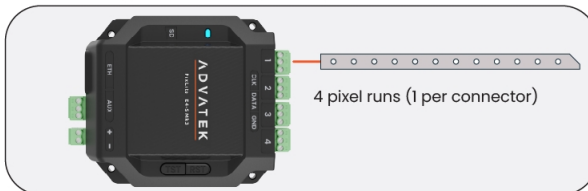
The PixLite E4-S Mk3 requires a source of 5 - 24Vdc to be connected to the power input, which is the small screw terminal marked “+” & “-”. The screws should be loosened for wire insertion and then tightened again, providing a highly robust and secure connection. Polarity for the connector is clearly marked on the lid.



The pixel LEDs can be connected to the pixel outputs as shown below.

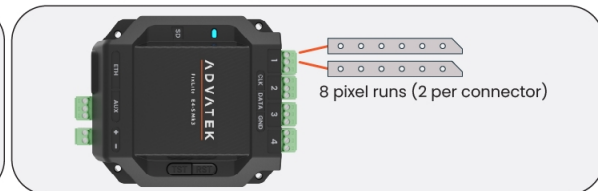
Expanded Mode Disabled

Any pixel type
1020 RGB / 768 RGBW pixels per run



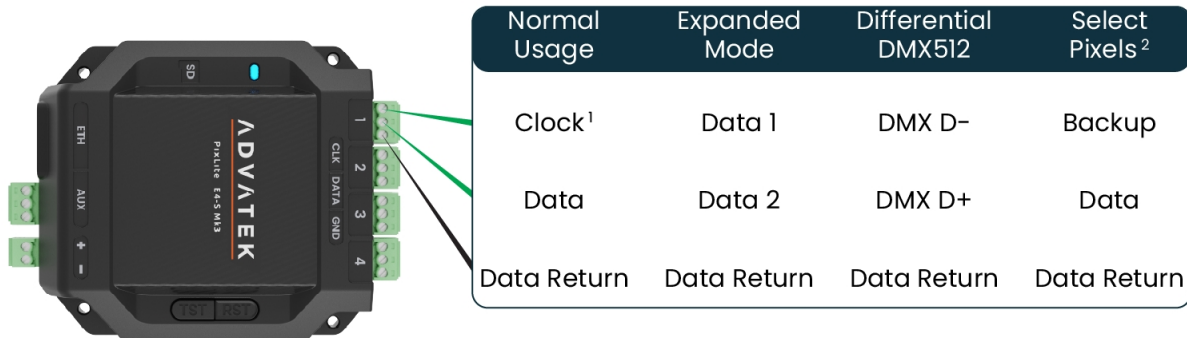
Expanded Mode Enabled

Data-only pixel types
510 RGB / 384 RGBW pixels per run



2 - Connector Pinouts

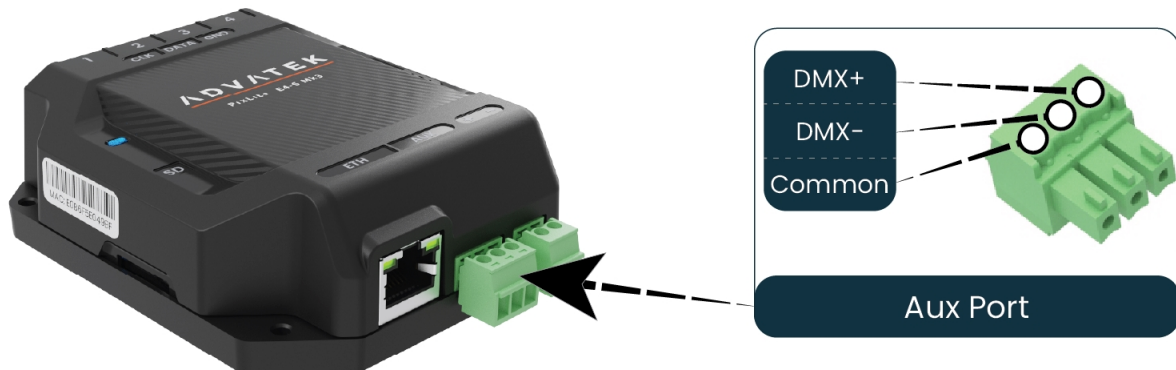
The pixel outputs have pinouts shown below.



1 For pixels that do not have a clock input, this pin is not connected.

2 Many pixels with a backup data input do not require it to be connected to the PixLite as shown. See pixel glossary on the Advatek website to confirm pixels which require a backup connection to the PixLite.

The Aux Port pinout is shown below.



3 - Startup & Network Connection

3.1 - Startup

Upon startup for the first time, the PixLite will be using DHCP/AutoIP and the status LED will flash green, indicating normal operation. If you have a router, then DHCP will automatically assign an IP address to both the PixLite and your computer.

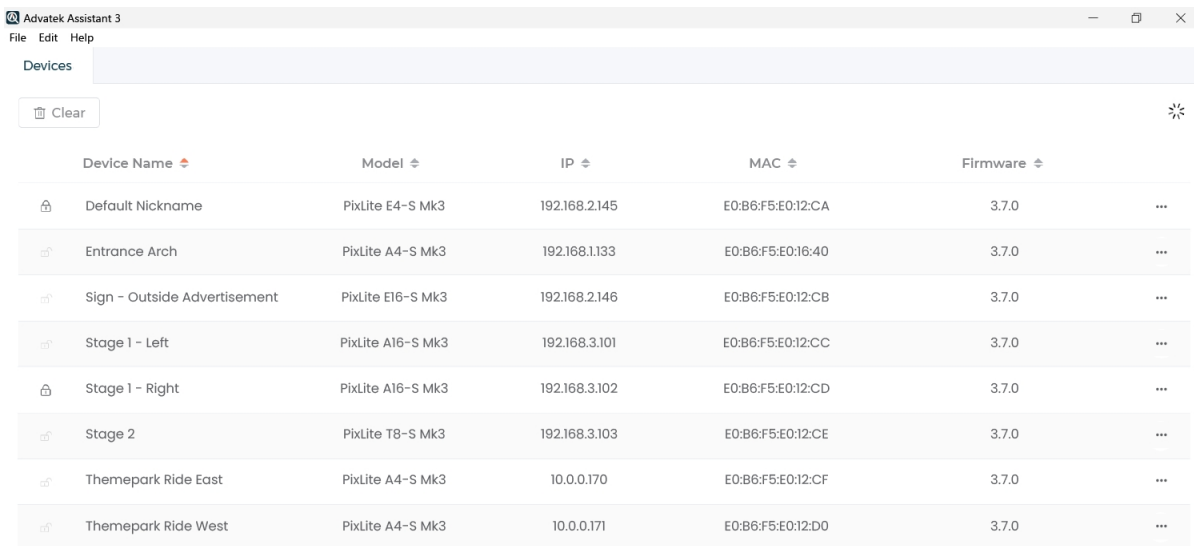
No Router? No Problem. Simply connect the PixLite directly to your computer, and open Advatek Assistant 3.

3.2 - Advatek Assistant 3

The easiest method for connecting to the device is by discovering through Advatek Assistant 3. Advatek Assistant 3 can be downloaded and installed, using the URL below:

www.advateklighting.com/advatek-assistant-3

Any active PixLite devices on the network will automatically be discovered and displayed. Double click to open its Management Interface, and begin configuring your new PixLite.



The screenshot shows the Advatek Assistant 3 application window. The title bar reads "Advatek Assistant 3" and the menu bar includes "File", "Edit", and "Help". Below the menu bar is a "Devices" section with a "Clear" button and a refresh icon. A table lists the discovered devices with columns for Device Name, Model, IP, MAC, and Firmware. Each row has a double-click icon on the left and a three-dot menu icon on the right.

Device Name	Model	IP	MAC	Firmware
Default Nickname	PixLite E4-S Mk3	192.168.2.145	E0:B6:F5:E0:12:CA	3.7.0
Entrance Arch	PixLite A4-S Mk3	192.168.1.133	E0:B6:F5:E0:16:40	3.7.0
Sign - Outside Advertisement	PixLite E16-S Mk3	192.168.2.146	E0:B6:F5:E0:12:CB	3.7.0
Stage 1 - Left	PixLite A16-S Mk3	192.168.3.101	E0:B6:F5:E0:12:CC	3.7.0
Stage 1 - Right	PixLite A16-S Mk3	192.168.3.102	E0:B6:F5:E0:12:CD	3.7.0
Stage 2	PixLite T8-S Mk3	192.168.3.103	E0:B6:F5:E0:12:CE	3.7.0
Themepark Ride East	PixLite A4-S Mk3	10.0.0.170	E0:B6:F5:E0:12:CF	3.7.0
Themepark Ride West	PixLite A4-S Mk3	10.0.0.171	E0:B6:F5:E0:12:D0	3.7.0

4 - Further Information

For a more in-depth understanding of the device, including physical installation, electrical connections, network connections, operation, and specifications, you should consult the User Manual:

www.advateklighting.com/downloads/user-manuals/pixlite-e4-s-mk3

You'll find information on management and configuration of the device, including its internal SHOWTime feature set in the PixLite Mk3 Management Guide:

www.advateklighting.com/downloads/user-manuals/pixlite-mk3-management-guide

For any other questions, you can reach out to our support team at the link below:

www.advateklighting.com/contact

5 - Warranty Registration

For your complete peace of mind, this device comes with an industry leading extended warranty period of 5 years, subject to registration.

Please register your Advatek PixLite® Mk3 product using the link below.

www.advateklighting.com/warranty-registration

All products need to be used and installed as outlined in the user manual. See our terms and conditions of sale at the link below for information on returns, faults and warranty claims.

www.advateklighting.com/terms/sale-terms-and-conditions